



CHRISTIE'S | Hunt Estates
INTERNATIONAL REAL ESTATE

One of Jersey's finest homes and gardens
St Brelade, Jersey

ONE OF JERSEY'S FINEST HOMES AND GARDENS

One of Jersey's finest homes, this impressive granite family residence, with its ornate gables and tall chimneys, was built in the Arts and Crafts vernacular in 1912.

The property is located in the desirable parish of St Brelade and is just a 16 min walk to the picturesque St Aubin's Bay and harbour with its many restaurants and the Royal Channel Islands Yacht Club.

The property is approx. 10,400 sq ft and includes eight bedrooms, six bathrooms and several elegant reception rooms with impressive granite fireplaces, a grand entrance hall also with a granite fireplace and hardwood parquet floors.

Of particular note, is a billiard/reading room on the first floor of the property with a stunning cathedral style ceiling with its wooden arches, which rise four and a half metres to the apex. It enjoys the most beautiful aspects over the grounds.

In addition, there is a 2-bedroom cottage for guests or staff, an artist's studio that can also be used as a gym/yoga room. There are gardener's outbuildings, storage, and garaging.







This fine and prestigious property is a delight for those who appreciate the beauty and tranquillity that a well-planned and established garden can provide.

Over many decades the gardens have been lovingly created and maintained. "Rooms of Gardens" include formal garden beds filled with shrubs and plants, a rose garden, herb garden, orchard, lawned areas, all providing colour every season. Wisteria adorns the south/east façade where there is a large conservatory and a sheltered, paved patio which is especially enchanting with night lighting. Additionally, there are private parkland walks and extensive cotil filled with rhododendrons, hydrangeas, and trees.

Indeed, the property is recognised island wide for having one of the most beautiful private gardens and is often opened for charity events.

Set within seven and a half acres, there is also an outdoor swimming pool with changing rooms, a thatched summer house, En Tout Cas tennis court, a large Edwardian style greenhouse.





In recent years the property has benefitted from re-roofing as well as refurbishment.

There are two approaches, one to the main entrance where there is a level gravelled drive leading to the stunning granite arched doorway; the other entrance lies to the south where there is garaging for five cars. There are also garden workshops.

This unique home with manicured grounds will take your breath away! It is well located for the south coast beaches and being located in the west, makes it convenient for the airport and other sports amenities such as golf and surfing.

This property is available to Non-Qualified persons (subject to conditions).

This home is now ready for new owners to enjoy with family and friends.

Enjoy a personal tour with Christie's International Real Estate affiliate in Jersey, Hunt Estates.





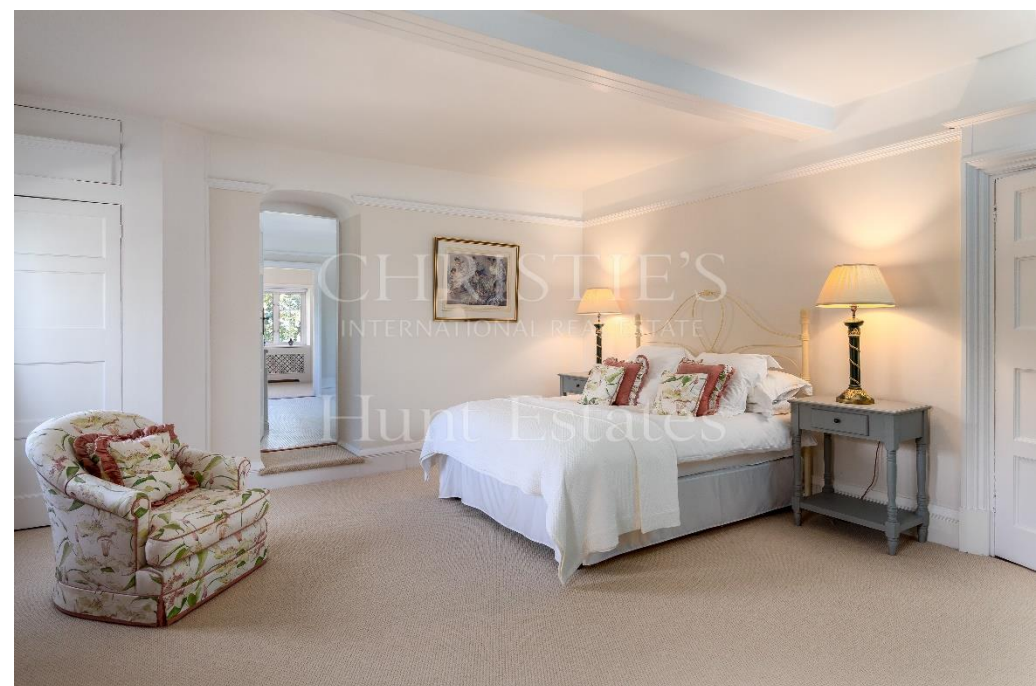
CHRISTIE'S
INTERNATIONAL REAL ESTATE
Estate





CRISTIE'S
INTERNATIONAL REAL ESTATE
Hunt Estates











CHRISTIE'S
INTERNATIONAL REAL ESTATE
Hunt & Partners











FEATURES

- Impressive granite family residence set in 7.5 acres
- One of the most beautiful private gardens in Jersey
- Private parkland walks and extensive cotil
- Within walking distance of St Aubin's Village and harbour
- Billiards room with cathedral style ceiling
- Additional staff or guest accommodation and garden studio
- Swimming pool with pool house
- Thatched summer house and Edwardian style green house
- En Tout Cas tennis court

INFORMATION

- Mains water and drains
- Oil heating
- Mains gas in kitchen
- Mostly double glazed
- Two double garages
- Additional parking for 10 cars
- Freehold and non-qualified/registered (subject to conditions)



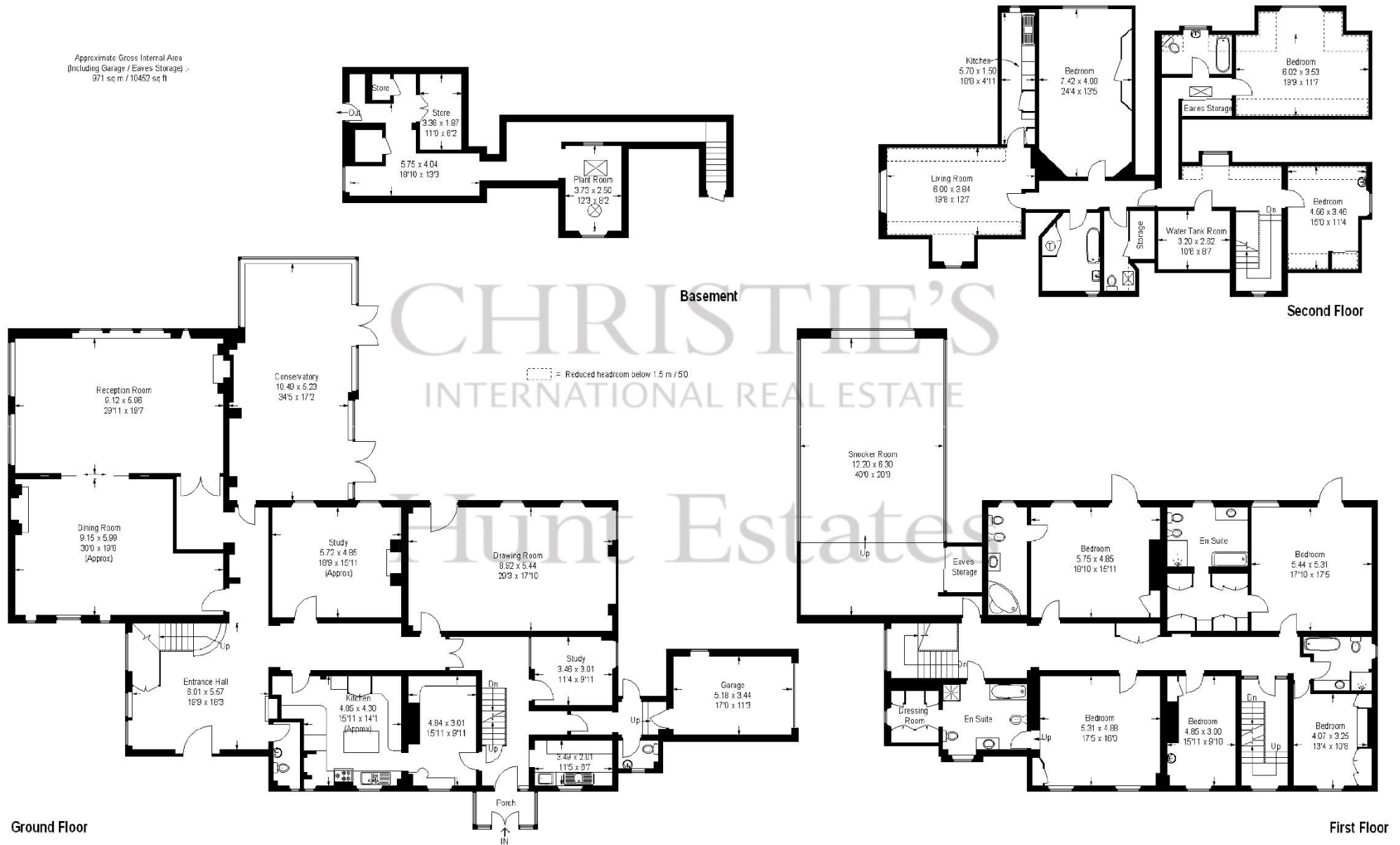
Gill Hunt, Fellow NAEA
Director

gill@huntstates.com
T +44 (0)7797 721881
www.huntstates.com
9 New Street, St Helier,
Jersey, JE2 3RA

CHRISTIE'S | Hunt Estates
INTERNATIONAL REAL ESTATE

Grey Gables, Main House

Approximate Gross Internal Area
(Including Garage / Eaves Storage) :-
371 sq.m / 10452 sq.ft



Grey Gables - Bridge Room, Greenhouse And Garaging

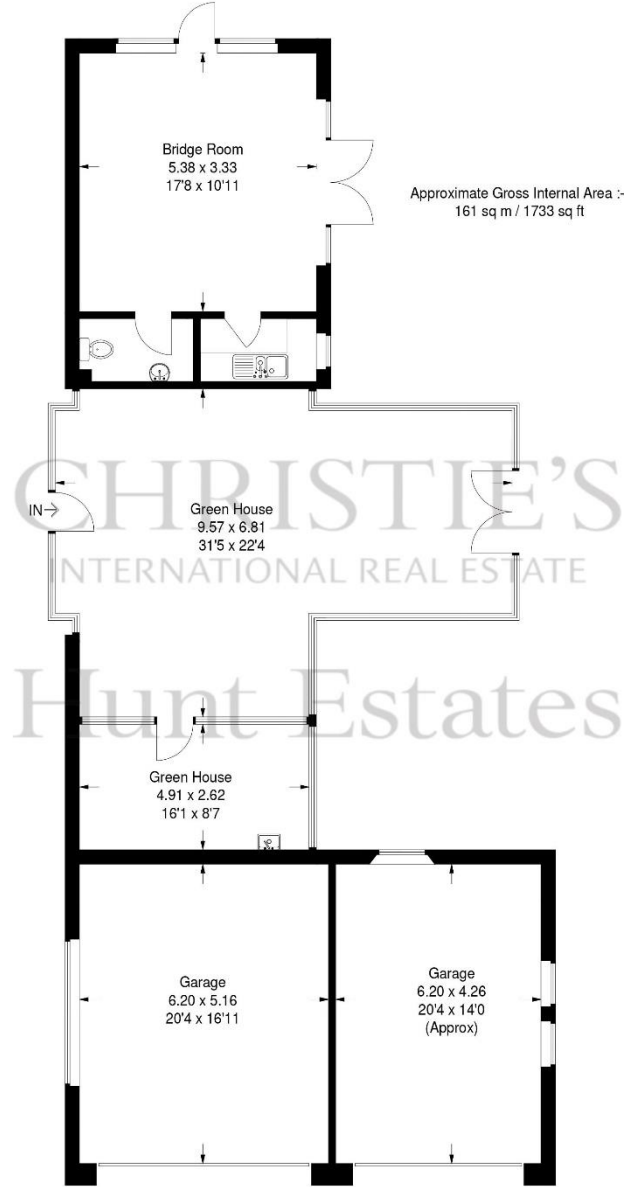


Illustration for identification purposes only, measurements are approximate, not to scale.
FloorplansSketch.com © 2012 (ID30436)

Grey Gables, Pool Block

Approximate Gross Internal Area :- 181 sq m / 1948 sq ft

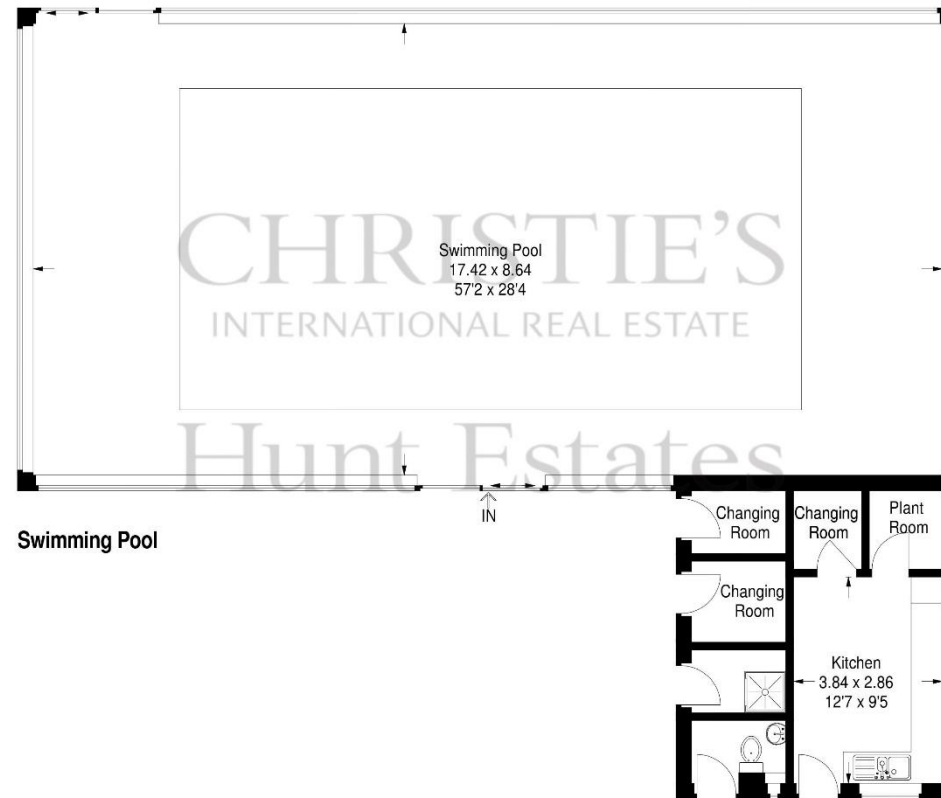
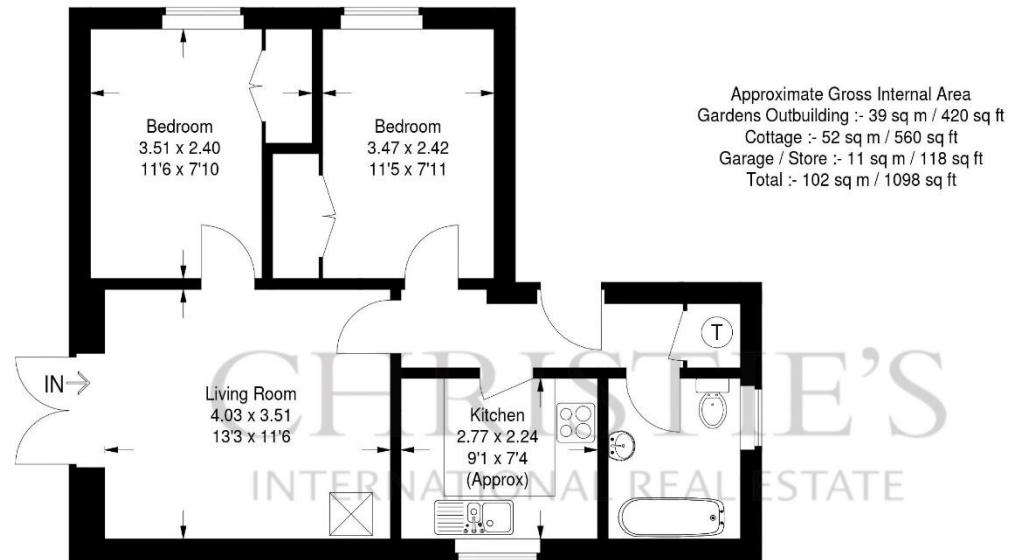
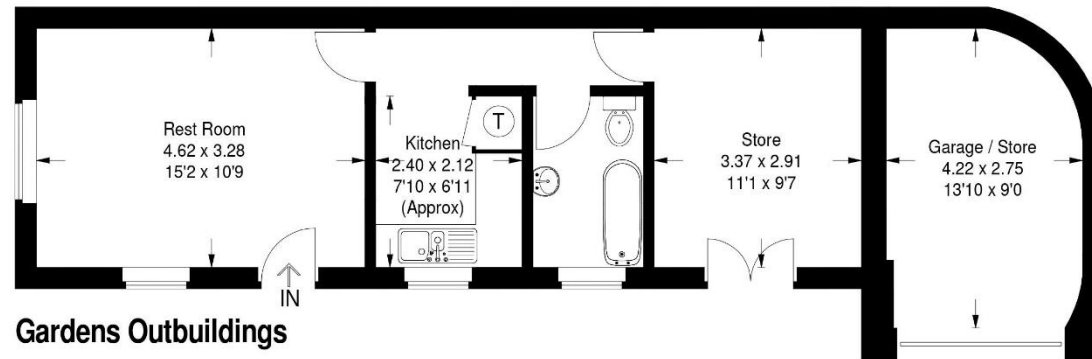


Illustration for identification purposes only, measurements are approximate, not to scale.
FloorplansuSketch.com © 2012 (ID30437)

Grey Gables, Gardeners Block And Cottage



Cottage



Gardens Outbuildings

As the selected exclusive affiliate of Christie's International Real Estate in Jersey, Channel Islands, Hunt Estates combines local expertise with global reach via Christie's affiliation to the most famous real estate companies in the world.

An invitation-only affiliate network, Christie's International Real Estate selected Hunt Estates in 2020 to represent the famous Christie's brand in the sphere of luxury real estate in Jersey.

CHRISTIE'S | Hunt Estates

INTERNATIONAL REAL ESTATE

9 New Street, St Helier, Jersey, JE2 3RA, Channel Islands | +44 1534 860650 | www.huntestates.com | enquiries@huntestates.com

Disclaimer: All information provided herein has been obtained from sources believed reliable, but may be subject to errors, omissions, change of price, prior sale, withdrawal without notice. Hunt Estates make no representation, warranty, or guarantee as to accuracy of any information contained herein. You should consult your advisors for an independent investigation of any properties. All viewings to be conducted through Hunt Estates.