



Hunt Estates

Detached Home in Peaceful Location
St. Ouen, Jersey

DETACHED HOME IN PEACEFUL LOCATION

Discover this spacious recently refurbished 4 bedroom, 3 bathroom family home, nestled in a peaceful private location just on the outskirts of St Ouen's Village.

Approached via a private tree line driveway, the home boasts a large kitchen/diner with modern stone countertops, Hotpoint appliances, and direct access to a patio, perfect for al-fresco dining over looking the large open front garden.

The spacious living room features french doors, solid oak flooring, and a wood burning stove, ideal for the up and coming winter months. The 4th bedroom ensuite is on the ground floor, which is also ideal as a playroom, if not required as a bedroom. There is also a study at the end of the welcoming entrance hallway.

The first floor has 3 additional bedrooms, including the main bedroom with an en-suite and a house bathroom.

Outside is a south facing landscaped garden with surrounding trees and mature shrubs and driveway for ample parking and single garage.

This home is perfect for family living and anyone wishing to enjoy spacious outdoor living in a peaceful location but also close to Village shops and nearby beaches.

Available immediately.









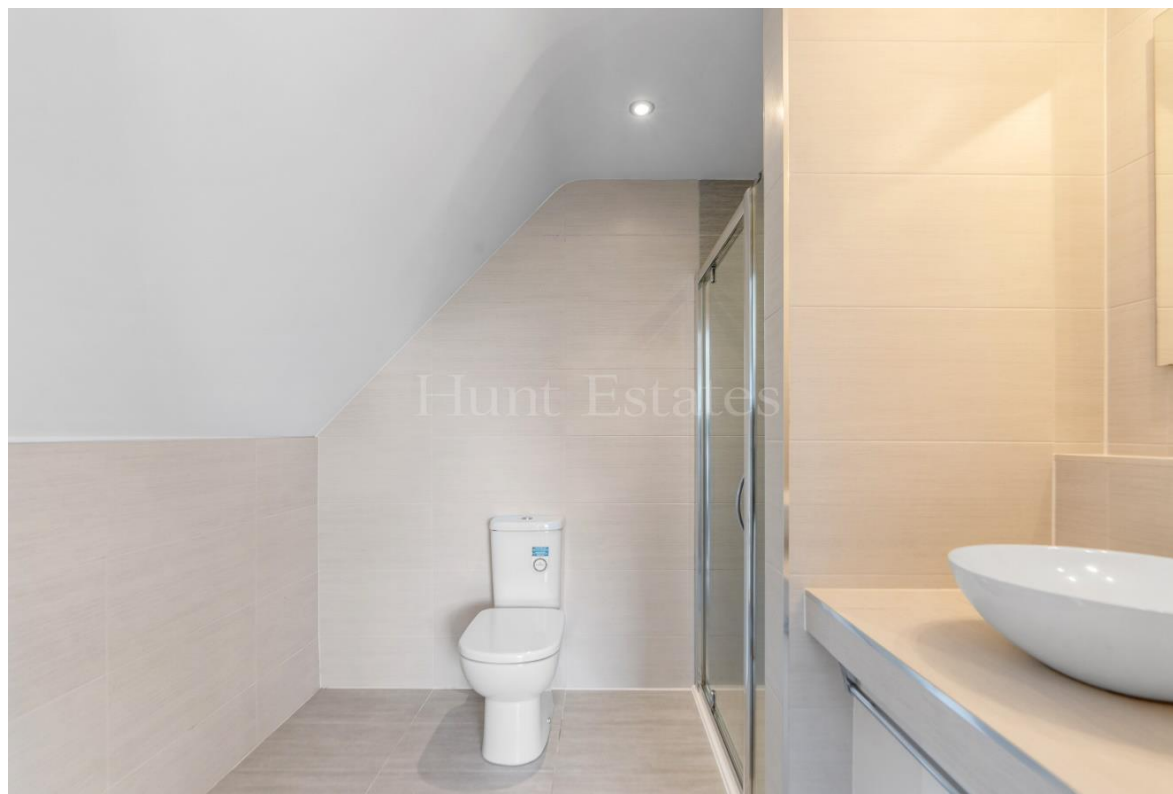








Hunt Estates









FEATURES

- 4 bedrooms, 3 bathrooms
- Private & peaceful location
- Private driveway set back from the road
- Large laid to lawn gardens
- Modern large kitchen/diner
- Approx 2,000 sq ft

INFORMATION

- Mains water
- Septic tank and soakaway
- Electric heating
- Single garage and ample parking
- Occupier rates for 2024 £348.75
- Regret no pets
- Available immediately to Entitled/Licensed residents
- Please note that the equivalent of one month's rent is required for the deposit



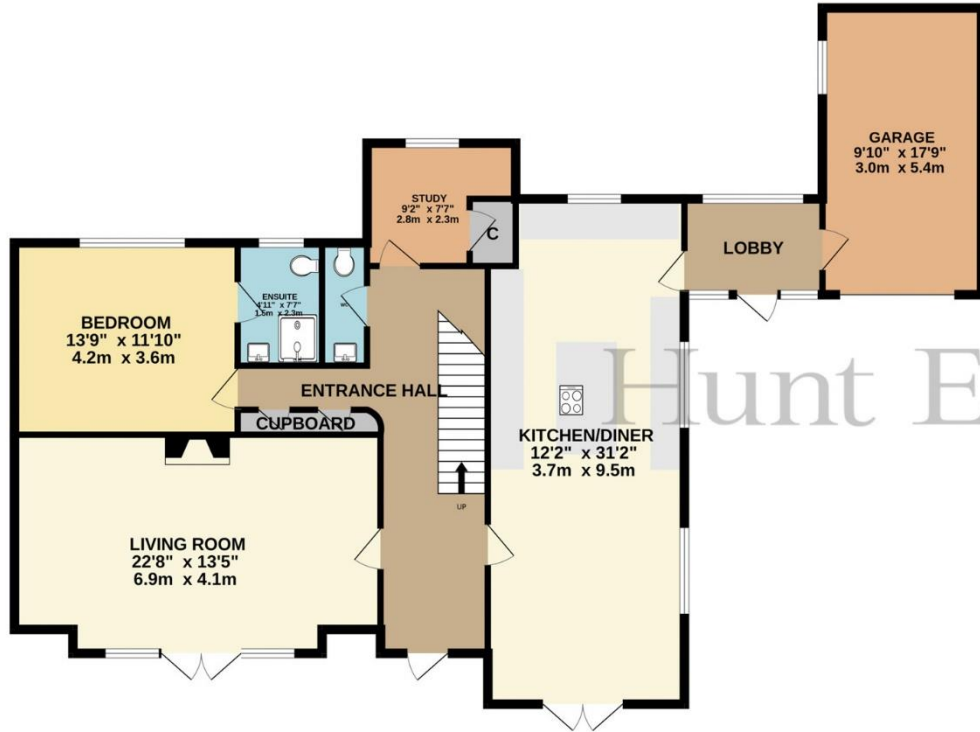
Danny Bosio
Property Negotiator

danny@huntestates.com
T +44 (0)7797 712711
www.huntestates.com
9 New Street, St Helier,
Jersey, JE2 3RA

CHRISTIE'S | Hunt Estates
INTERNATIONAL REAL ESTATE



GROUND FLOOR
1379 sq.ft. (128.1 sq.m.) approx.



1ST FLOOR
796 sq.ft. (74.0 sq.m.) approx.



TOTAL FLOOR AREA : 2175 sq.ft. (202.1 sq.m.) approx.

Whilst every attempt has been made to ensure the accuracy of the floorplan contained here, measurements of doors, windows, rooms and any other items are approximate and no responsibility is taken for any error, omission or mis-statement. This plan is for illustrative purposes only and should be used as such by any prospective purchaser. The services, systems and appliances shown have not been tested and no guarantee as to their operability or efficiency can be given.

Made with Metropix ©2024

Hunt Estates

9 New Street, St Helier, Jersey, JE2 3RA, Channel Islands | +44 1534 860650 | www.huntestates.com | enquiries@huntestates.com

Disclaimer: All information provided herein has been obtained from sources believed reliable, but may be subject to errors, omissions, change of price, prior sale, withdrawal without notice. Hunt Estates make no representation, warranty, or guarantee as to accuracy of any information contained herein. You should consult your advisors for an independent investigation of any properties. All viewings to be conducted through Hunt Estates.