



Hunt Estates

Renovated One Bedroom Apartment with Study  
St. Helier, Jersey

## RENOVATED ONE BEDROOM APARTMENT WITH STUDY

A newly renovated one-bedroom apartment located in the character, Landmark Victorian building, Norfolk Terrace. The apartment is light and bright throughout and has been refurbished to a high standard throughout.

Comprising; sitting room/diner with feature fireplace, modern fitted kitchen and a double bedroom with fitted wardrobes and an en-suite shower room.

The apartment benefits from a separate room with a WC that is accessed via a lower landing in the main building and provides additional space such as a home office/study.

The apartment comes with use of one allocated parking space.

Located on the outskirts of town, the apartment is only a ten-minute walk to the town centre, parks, and beach.











## FEATURES

- One bedroom, one shower room
- Light and bright throughout
- Good sized sitting room/diner with feature fireplace
- Separate room with cloakroom
- Refurbished throughout to a high standard
- Short walk to St Helier town centre, parks, and the beach

## INFORMATION

- Mains water and drains
- Electric heating
- Original single glazed sash windows
- Character grade 2 listed building
- One allocated parking space
- Service charge not yet agreed but to cover building insurance, parish rates and communal cleaning and electricity
- Flying Freehold and Entitled/Licensed

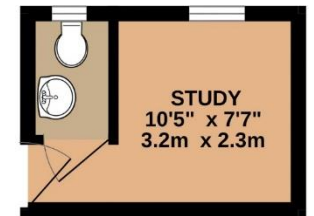
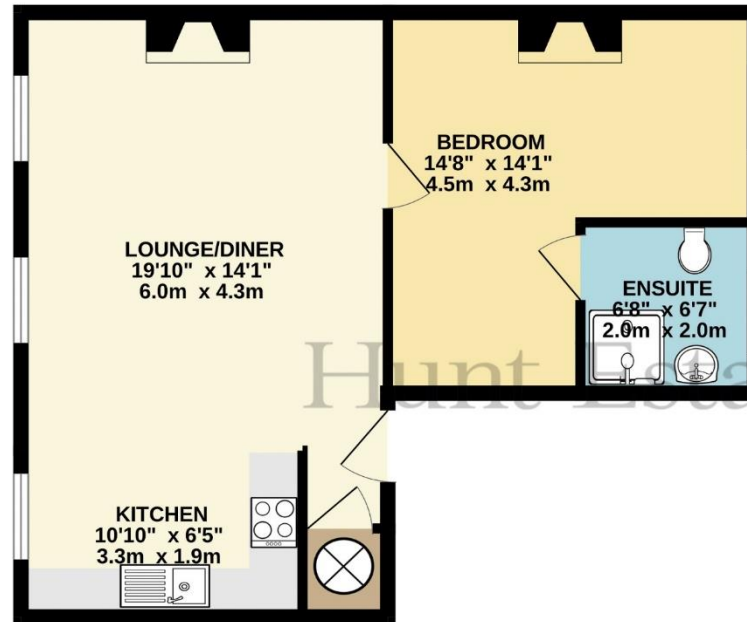


Gill Hunt, FNAEA  
Director

[gill@huntstates.com](mailto:gill@huntstates.com)  
T +44 (0)7797 721881  
[www.huntstates.com](http://www.huntstates.com)  
9 New Street, St Helier,  
Jersey, JE2 3RA

CHRISTIE'S | Hunt Estates  
INTERNATIONAL REAL ESTATE

## GROUND FLOOR 599 sq.ft. (55.7 sq.m.) approx.



1 BED APT

TOTAL FLOOR AREA : 599 sq.ft. (55.7 sq.m.) approx.

Whilst every attempt has been made to ensure the accuracy of the floorplan contained here, measurements of doors, windows, rooms and any other items are approximate and no responsibility is taken for any error, omission or mis-statement. This plan is for illustrative purposes only and should be used as such by any prospective purchaser. The services, systems and appliances shown have not been tested and no guarantee as to their operability or efficiency can be given.  
Made with Metropix ©2023



# Hunt Estates

9 New Street, St Helier, Jersey, JE2 3RA, Channel Islands | +44 1534 860650 | [www.huntestates.com](http://www.huntestates.com) | [enquiries@huntestates.com](mailto:enquiries@huntestates.com)

Disclaimer: All information provided herein has been obtained from sources believed reliable, but may be subject to errors, omissions, change of price, prior sale, withdrawal without notice. Hunt Estates make no representation, warranty, or guarantee as to accuracy of any information contained herein. You should consult your advisors for an independent investigation of any properties. All viewings to be conducted through Hunt Estates.