



Hunt Estates

Penthouse Apartment in Brand New Development  
St. Helier, Jersey

## PENTHOUSE APARTMENT IN BRAND NEW DEVELOPMENT

This apartment is situated on the 9th floor and has been finished throughout to the gold specification, which includes Miele appliances, comfort cooling and heating system and Villeroy and Boch bathrooms. The outlook has views across to St Aubins and also a rooftop view of St Helier.

Comprising; open plan sitting room/kitchen with floor to ceiling windows allowing light to flood into your apartment along with access out onto your balcony, main bedroom with mirrored fitted wardrobes and en-suite shower room, second double bedroom with mirrored fitted wardrobes, house bathroom and utility cupboard.

There is underground parking for one car and a private store.

The lovely marina and sea views, the close proximity to St Helier town centre, and with all the facilities at the Waterfront on hand, make this an ideal location for living and working in St Helier.

Viewings are not to be missed.





Hunt Estates















## FEATURES

- Brand new apartment
- Views across St Aubins
- 2 bedrooms, 2 bathrooms
- Separate lockable store
- Open plan sitting room/kitchen
- Separate utility cupboard

## INFORMATION

- Mains water and drains
- Electric heating
- Underfloor heating to all bathrooms
- Comfort cooling and heating system to kitchen, living room and bedrooms
- Lift service
- Concierge service and CCTV
- Colour video entry door system
- One undercover parking space
- Monthly service charge of £333 to cover parish occupier and foncier rates, water rates and service charge
- Share transfer

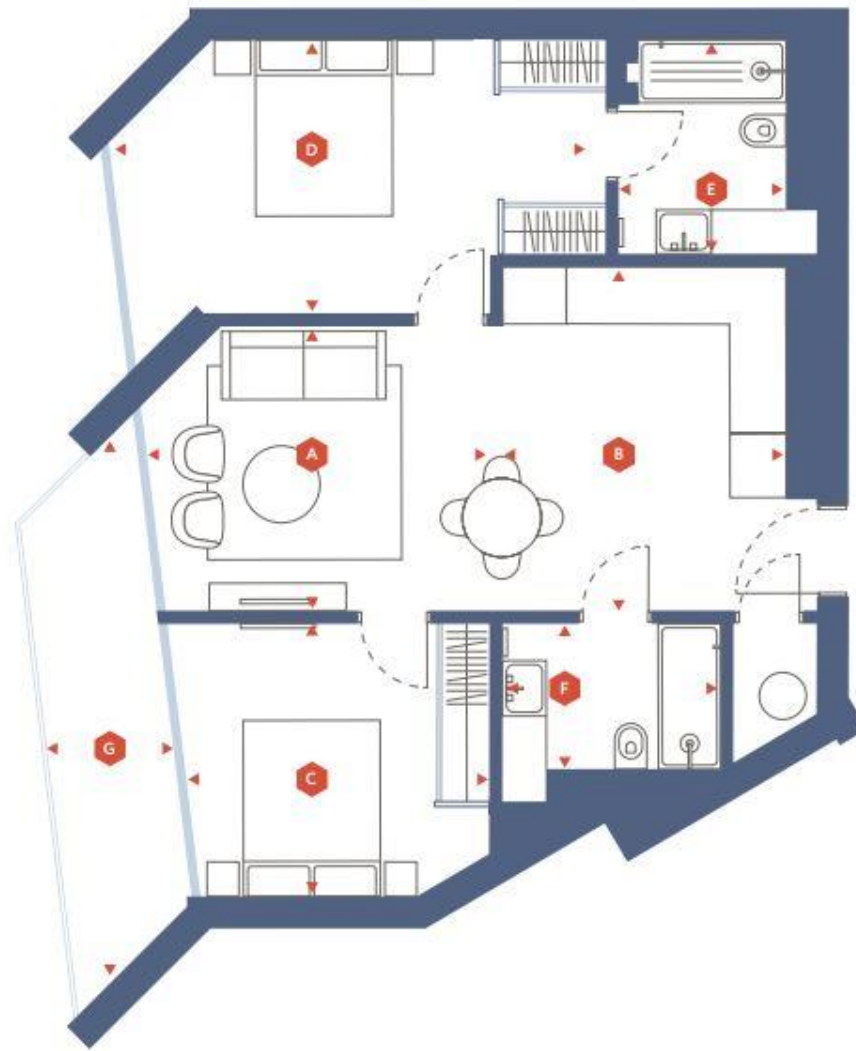


Sacha Butlin  
Property Negotiator

sacha@huntstates.com  
T +44 (0)7829 917449  
www.huntstates.com  
9 New Street, St Helier,  
Jersey, JE2 3RA

CHRISTIE'S | Hunt Estates  
INTERNATIONAL REAL ESTATE





▼ *Gross Internal Area*

**64.08m<sup>2</sup> / 689.50 ft<sup>2</sup>**

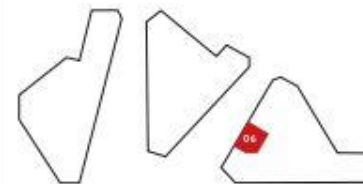
▼ *External Dimensions*

**7.87m<sup>2</sup> / 84.68 ft<sup>2</sup>**

▼ *Approximate Room Dimensions*

<b>A</b>	- W: 4.0 m / 13.1ft	X L: 3.15 m / 10.3 ft
<b>B</b>	- W: 3.0 m / 9.8 ft	X L: 3.8 m / 12.5 ft
<b>C</b>	- W: 3.2 m / 10.4 ft	X L: 3.0 m / 9.8 ft
<b>D</b>	- W: 5.41 m / 17.7 ft	X L: 3.0 m / 9.8 ft
<b>E</b>	- W: 1.8 m / 5.9 ft	X L: 2.2 m / 7.2 ft
<b>F</b>	- W: 2.43 m / 8 ft	X L: 1.7 m / 5.5 ft
<b>G</b>	- W: 1.5 m / 4.9 ft	X L: 5.2 m / 17 ft

▼ *Locator*



IZI

# Hunt Estates

9 New Street, St Helier, Jersey, JE2 3RA, Channel Islands | +44 1534 860650 | [www.huntestates.com](http://www.huntestates.com) | [enquiries@huntestates.com](mailto:enquiries@huntestates.com)

Disclaimer: All information provided herein has been obtained from sources believed reliable, but may be subject to errors, omissions, change of price, prior sale, withdrawal without notice. Hunt Estates make no representation, warranty, or guarantee as to accuracy of any information contained herein. You should consult your advisors for an independent investigation of any properties. All viewings to be conducted through Hunt Estates.