



Hunt Estates

Three-Bedroom Property with Far Reaching Views  
St Lawrence, Jersey



## THREE-BEDROOM PROPERTY WITH FAR REACHING VIEWS

A wonderful three-bedroom bungalow which has been kept in immaculate condition, is bright and airy throughout and has stunning, far reach views across St Peter's valley.

Briefly comprising; entrance hall, sitting room with log burning fire leading up to the open plan diner/kitchen which is fitted with integrated appliances. There are three double bedrooms, all of which benefit from built in wardrobes and a house bathroom.

Externally there is a large west facing terrace, which can be accessed from the sitting area and from two bedrooms, including the main bedroom. There is also a tiered garden with woodland area, which can be accessed from the kitchen. The property has a carport and parking for one car.

Additionally, the bungalow benefits from a separate, multi-use area, which could have a range of uses including a utility room, home office, gym or a separate space for teenagers to use.

This property would make an excellent lock up and leave and a great alternative to apartment living.

Viewings come highly recommended.















## FEATURES

- Three-bedroom bungalow
- Large sun terrace and tiered garden with woodland area
- Far reaching views across St Peter's Valley
- Separate multi-use area
- Immaculate condition throughout
- Great lock up and leave or alternative to apartment living

## INFORMATION

- Mains water and drains
- Oil fired central heating
- Double glazed
- Carport and parking for one car
- Freehold and Entitled



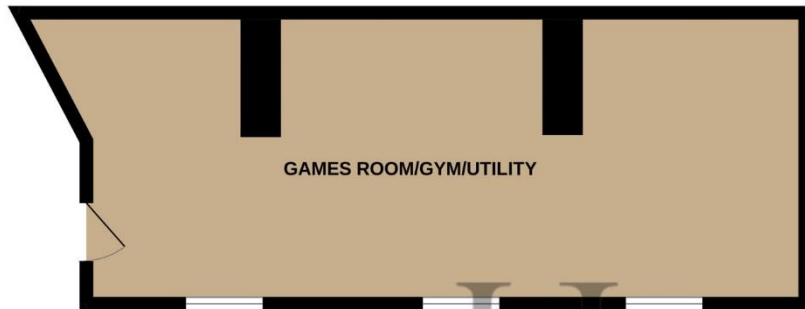
Gill Acton  
Property Negotiator

[gill.acton@huntstates.com](mailto:gill.acton@huntstates.com)  
T +44 (0)7797 961649  
[www.huntstates.com](http://www.huntstates.com)  
9 New Street, St Helier,  
Jersey, JE2 3RA

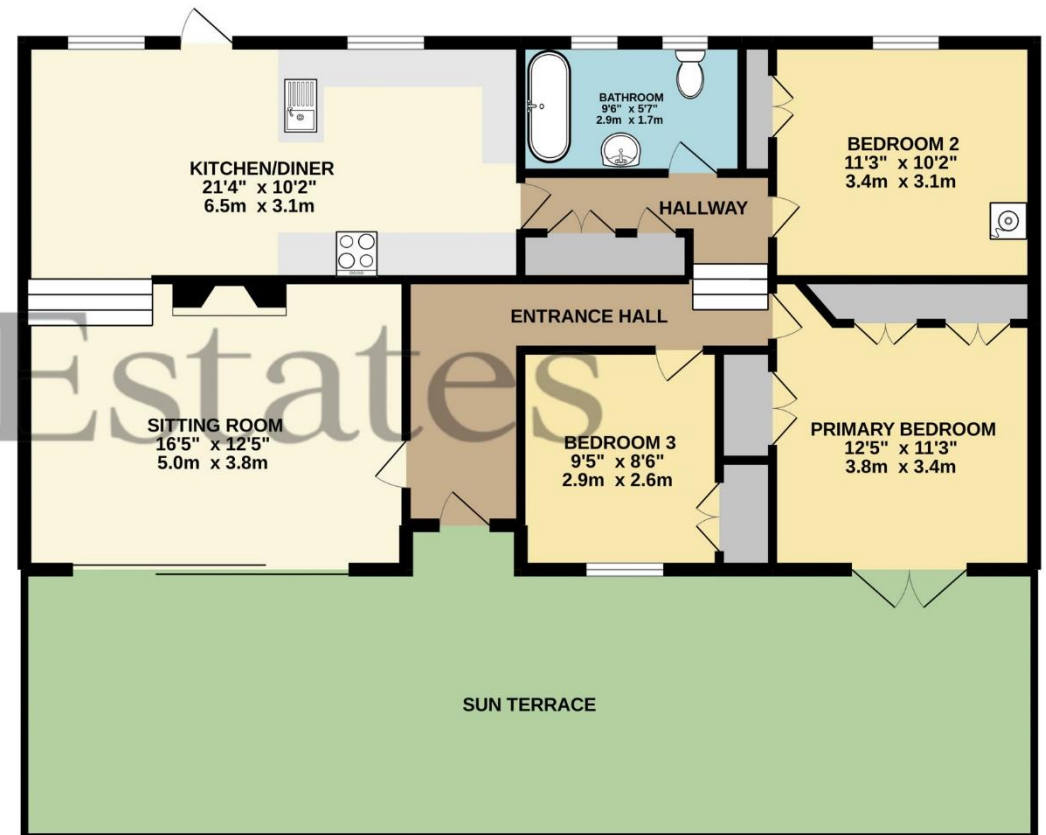
**CHRISTIE'S** | Hunt Estates  
INTERNATIONAL REAL ESTATE



**BASEMENT**  
377 sq.ft. (35.0 sq.m.) approx.



**GROUND FLOOR**  
965 sq.ft. (89.7 sq.m.) approx.



**TOTAL FLOOR AREA : 1342 sq.ft. (124.7 sq.m.) approx.**

Whilst every attempt has been made to ensure the accuracy of the floorplan contained here, measurements of doors, windows, rooms and any other items are approximate and no responsibility is taken for any error, omission or mis-statement. This plan is for illustrative purposes only and should be used as such by any prospective purchaser. The services, systems and appliances shown have not been tested and no guarantee as to their operability or efficiency can be given.  
Made with Metropix ©2022

# Hunt Estates

9 New Street, St Helier, Jersey, JE2 3RA, Channel Islands | +44 1534 860650 | [www.huntestates.com](http://www.huntestates.com) | [enquiries@huntestates.com](mailto:enquiries@huntestates.com)

Disclaimer: All information provided herein has been obtained from sources believed reliable, but may be subject to errors, omissions, change of price, prior sale, withdrawal without notice. Hunt Estates make no representation, warranty, or guarantee as to accuracy of any information contained herein. You should consult your advisors for an independent investigation of any properties. All viewings to be conducted through Hunt Estates.