



DETACHED FAMILY HOME

This beautifully presented five bedroom granite family home, is situated in a highly desirable area in the east of the island. One of three properties in a gated development, this house has a beautiful turret feature making for a stunning first impression.

The property offers a spacious split level living room which leads out on to the enclosed garden, and incorporates the bottom floor of the turret, creating a great entertaining and living space. The Christian's kitchen features a Rangemaster oven and space for a large dining room table. There is a separate utility room and integrated double garage leading from the kitchen, making this space perfect for busy family life.

There are five double bedrooms, spread across the two upper floors. There is one house, two en suite bathrooms and a cloakroom all modern with a boutique hotel feel.

Externally there is a safe enclosed garden with patio area and mature planted borders.

This home is perfect for a growing family and is close to primary, secondary, and private schools. It is also a short walk to the beach at Green Island and you have beautiful countryside walks on your doorstep.





*“Superb split level living space,
flooded with light, leading on to
the garden”*



*“Views over protected field
from the living room, give a
feeling of being surrounded
by nature”*





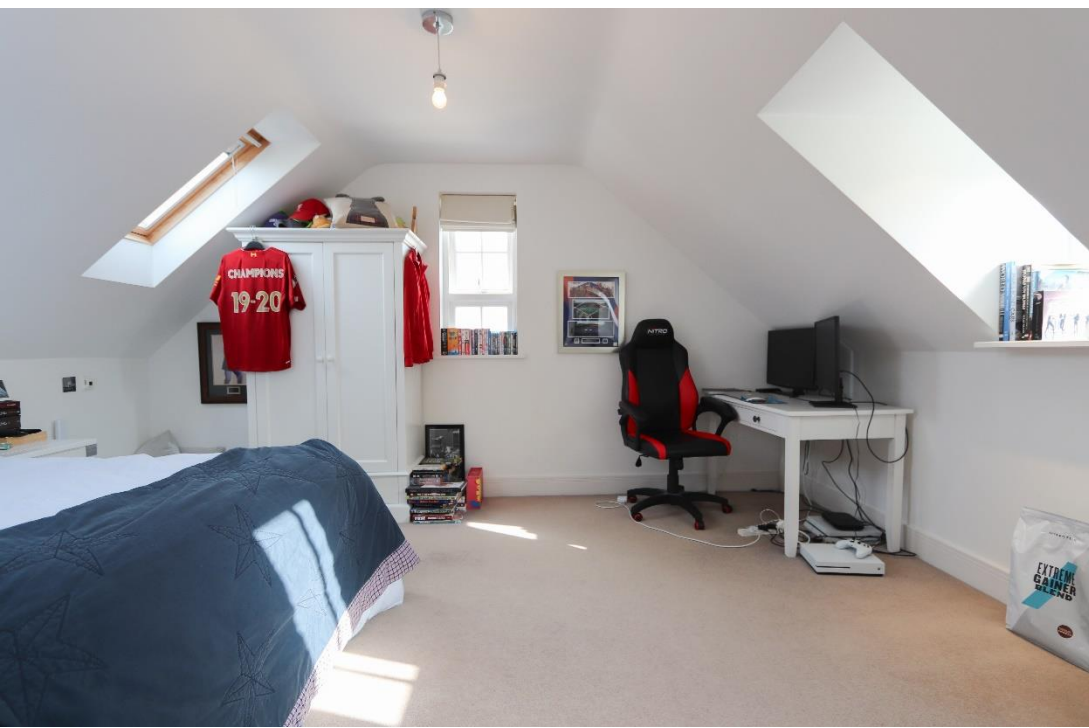
“Stunning 27’ Christian’s eat-in family kitchen, leading on to the garden, integral double garage and separate utility”





*"Main bedroom with en suite
bathroom featuring a free
standing bath"*





"There are five good size double bedrooms and three contemporary bathrooms, two of which are en suite"

FEATURES

- Beautiful granite turret
- 5 Double bedrooms and 3 bathrooms
- Christians eat-in kitchen
- Large reception room with split level
- Private enclosed garden
- Integral double garage
- Safe enclosed garden
- Close to Green Island beach

INFORMATION

- Mains water and drains
- Electric under floor heating
- Double garage and 2 parking space
- Freehold and Entitled



Sacha Butlin
Property Negotiator

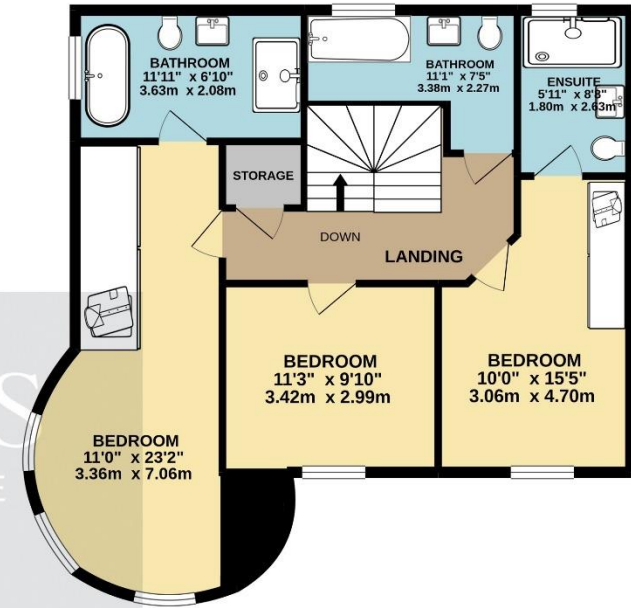
sacha@huntestates.com
T +44 (0)7829 917449
www.huntestates.com
9 New Street, St Helier,
Jersey, JE2 3RA

CHRISTIE'S | Hunt Estates
INTERNATIONAL REAL ESTATE

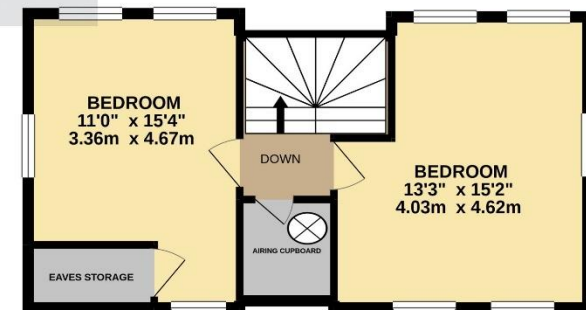
GROUND FLOOR
1109 sq.ft. (103.0 sq.m.) approx.



1ST FLOOR
763 sq.ft. (70.9 sq.m.) approx.



2ND FLOOR
434 sq.ft. (40.3 sq.m.) approx.



TOTAL FLOOR AREA : 2305 sq.ft. (214.2 sq.m.) approx.

Whilst every attempt has been made to ensure the accuracy of the floorplan contained here, measurements of doors, windows, rooms and any other items are approximate and no responsibility is taken for any error, omission or mis-statement. This plan is for illustrative purposes only and should be used as such by any prospective purchaser. The services, systems and appliances shown have not been tested and no guarantee as to their operability or efficiency can be given.

Made with Metropix ©2021

CHRISTIE'S
INTERNATIONAL REAL ESTATE
Hunt Estates

As the selected exclusive affiliate of Christie's International Real Estate in Jersey, Channel Islands, Hunt Estates (or Christie's Jersey) combines local expertise with global reach via Christie's affiliation to the most famous real estate companies in the world.

An invitation-only affiliate network, Christie's International Real Estate selected Hunt Estates in 2020 to represent the famous Christie's brand in the sphere of luxury real estate in Jersey.

CHRISTIE'S | Hunt Estates

INTERNATIONAL REAL ESTATE

9 New Street, St Helier, Jersey, JE2 3RA, Channel Islands | +44 1534 860650 | www.huntestates.com | enquiries@huntestates.com

Disclaimer: All information provided herein has been obtained from sources believed reliable, but may be subject to errors, omissions, change of price, prior sale, withdrawal without notice. Christie's Hunt Estates make no representation, warranty, or guarantee as to accuracy of any information contained herein. You should consult your advisors for an independent investigation of any properties. All viewings to be conducted through Christie's Hunt Estates.