



**CHRISTIE'S** | Hunt Estates  
INTERNATIONAL REAL ESTATE

Prestigious Compact Estate  
St Helier, Jersey



## PRESTIGIOUS COMPACT ESTATE IN JERSEY, CHANNEL ISLANDS

Christie's Hunt Estates is pleased to present one of Jersey's most significant homes. This magnificent property was fully rebuilt in a classical style in 2015 with the interior designed by Lady Henrietta Spencer Churchill. Special features include a gold leaf staircase leading to the first floor, from the impressive double height entrance hall.

The family home is set over three floors and provides spacious reception rooms for entertaining. There are large windows and doors facing south, overlooking the lawns, pool and pond with a fountain.

The accommodation includes everything you would expect in a property of such high standing; a large kitchen, a separate preparation kitchen and both formal and informal dining and living rooms. There are eight bedrooms and guest living space. In addition, there is a temperature-controlled wine room and cinema.

Externally, there is a secure gated entrance with driveway approach, a four-car garage block with two apartments for staff or office space. This magnificent property includes a swimming pool, sunken jacuzzi, tennis court and manicured lawns.

Located in the south of the island and conveniently, is near the beach and main town of St Helier. The airport is just 15 minutes' drive away.







CHERRY'S  
INTERNATIONAL ESTATE  
Estate





















CHRISTIE'S  
INTERNATIONAL REAL ESTATE  
Hunt Estates









Gill Hunt, Fellow NAEA  
Director

[gill@huntstates.com](mailto:gill@huntstates.com)  
T +44 (0)7797 721881  
[www.huntstates.com](http://www.huntstates.com)  
9 New Street, St Helier,  
Jersey, JE2 3RA

**CHRISTIE'S** | Hunt Estates  
INTERNATIONAL REAL ESTATE



Steven Hunt, FCIM, FIDM  
Director

[steven@huntstates.com](mailto:steven@huntstates.com)  
T +44 (0)7700 777700  
[www.huntstates.com](http://www.huntstates.com)  
9 New Street, St Helier,  
Jersey, JE2 3RA

**CHRISTIE'S** | Hunt Estates  
INTERNATIONAL REAL ESTATE

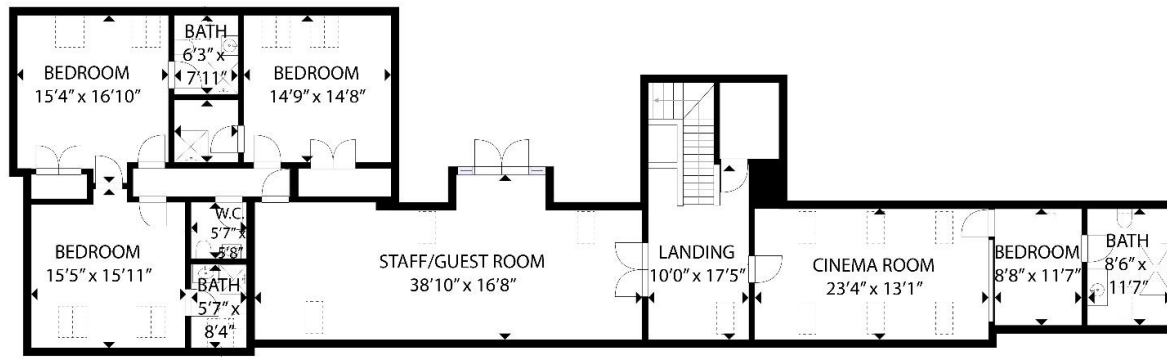
## FEATURES

- Prestigious compact estate
- Interior designed by Lady Spencer Churchill
- Beautiful gold leaf staircase
- Approx 15,000 sq. ft of accommodation
- Additional 2 and 3 bed accommodation
- Temperature controlled wine room
- 8 en suite bedrooms
- Beautiful, manicured grounds
- Swimming pool, jacuzzi and tennis court
- Large four-car garage block
- Secure home with gated entrance and long driveway

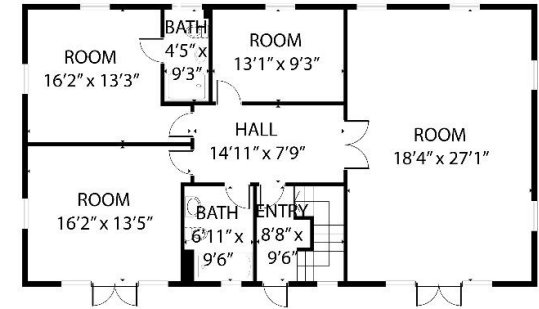
## INFORMATION

- Mains drains and water
- Oil under floor heating to ground and first floor
- Electric underfloor heating to family room
- Radiators on second floor
- CCTV
- Freehold and Entitled

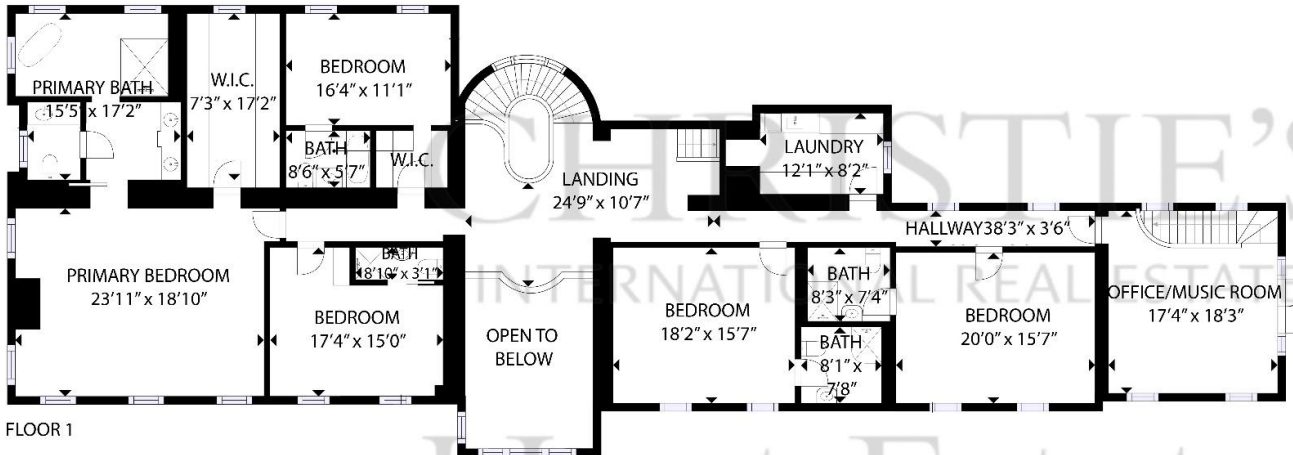




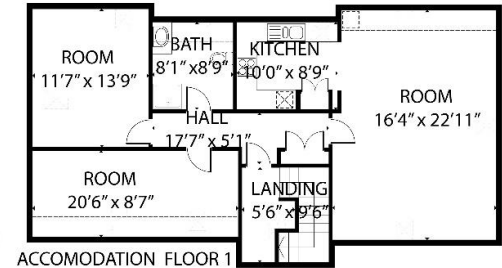
FLOOR 2



ACCOMODATION FLOOR 2



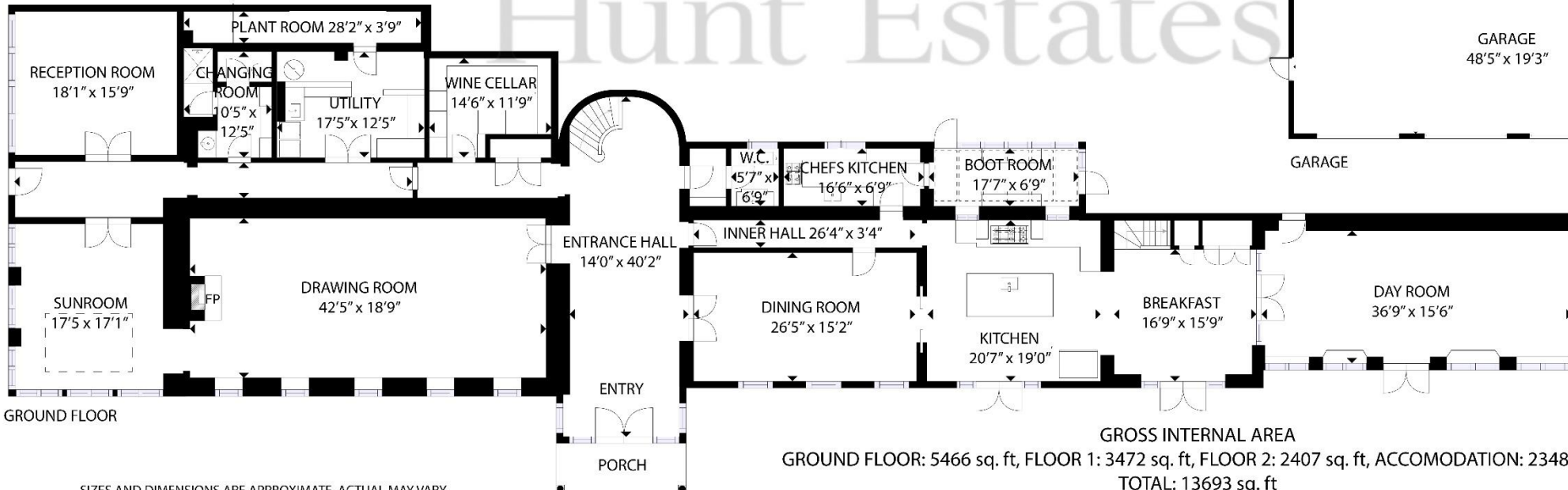
FLOOR 1



ACCOMODATION FLOOR 1



GARAGE



GROSS INTERNAL AREA

GROUND FLOOR: 5466 sq. ft, FLOOR 1: 3472 sq. ft, FLOOR 2: 2407 sq. ft, ACCOMODATION: 2348 sq. ft

TOTAL: 13693 sq. ft

EXCLUDED AREAS: GARAGE + STORES: 1277 sq. ft, REDUCED HEADROOM: 57 sq. ft

SIZES AND DIMENSIONS ARE APPROXIMATE, ACTUAL MAY VARY



As the selected exclusive affiliate of Christie's International Real Estate in Jersey, Channel Islands, Hunt Estates combines local expertise with global reach via Christie's affiliation to the most famous real estate companies in the world.

An invitation-only affiliate network, Christie's International Real Estate selected Hunt Estates in 2020 to represent the famous Christie's brand in the sphere of luxury real estate in Jersey.



# CHRISTIE'S | Hunt Estates

INTERNATIONAL REAL ESTATE

9 New Street, St Helier, Jersey, JE2 3RA, Channel Islands | +44 1534 860650 | [www.huntestates.com](http://www.huntestates.com) | [enquiries@huntestates.com](mailto:enquiries@huntestates.com)

Disclaimer: All information provided herein has been obtained from sources believed reliable, but may be subject to errors, omissions, change of price, prior sale, withdrawal without notice. Christie's Hunt Estates make no representation, warranty, or guarantee as to accuracy of any information contained herein. You should consult your advisors for an independent investigation of any properties. All viewings to be conducted through Christie's Hunt Estates.