



Hunt | Estates

St Saviour £535,000

Modern Duplex Apartment

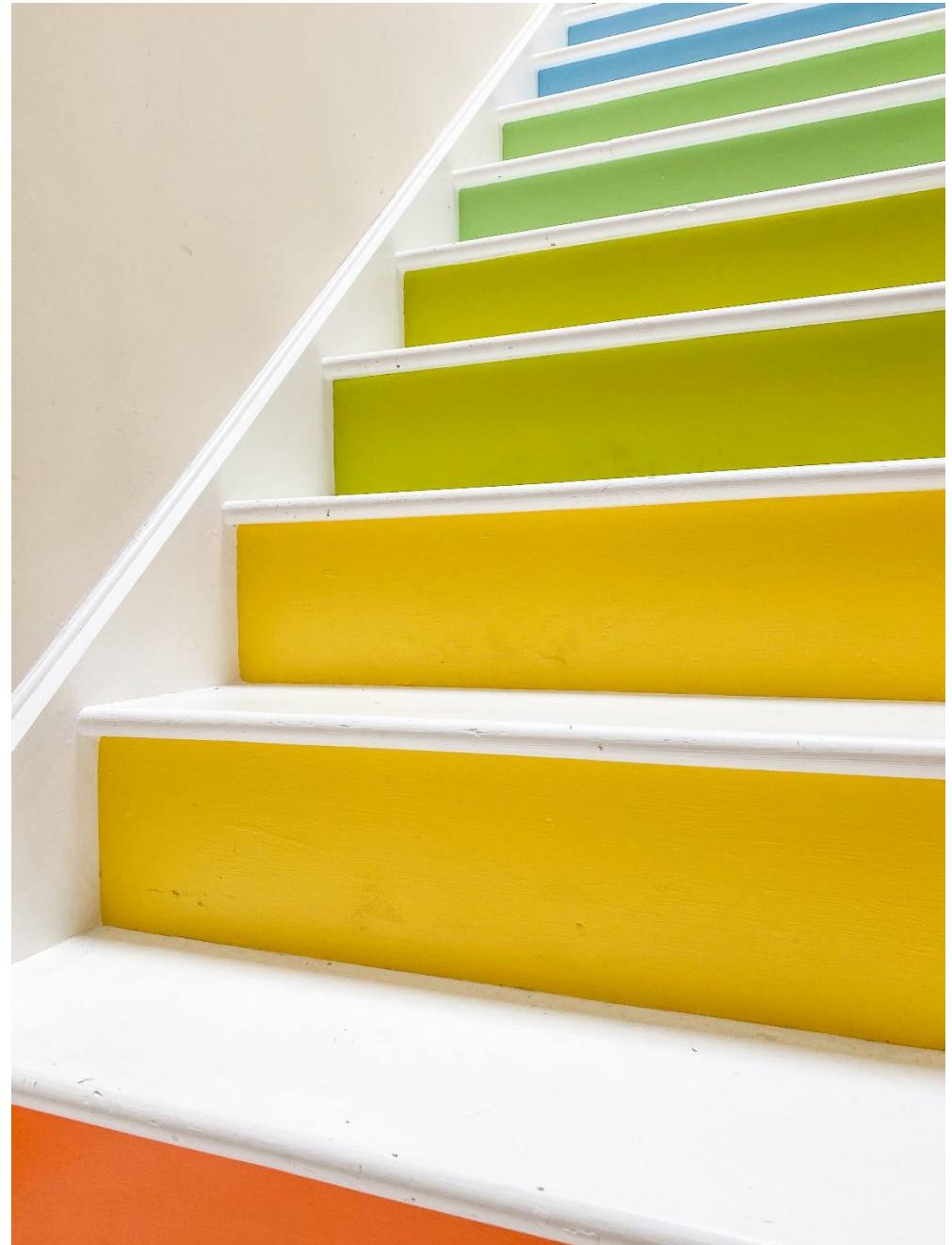
Located just down the road from the beach and across from Howard Davis Park, this stunning 3 bedroom duplex apartment is extremely spacious and benefits from its own private entrance.

Offering light and airy living accommodation, this property offers flexibility with 3 bedroom, 2 of which are en suite and potentially a 4th bedroom/2nd reception/work from home space. Giving you the freedom to create a home that works for you.

Hunt | Estates

Gill Hunt, Fellow NAEA
Director

gill@huntstates.com
T +44 (0)7797 721881
www.huntstates.com
9 New Street, St Helier, Jersey, JE2 3RA









Comprising: Entrance hall with stairs to first floor. On the first floor, a large open plan kitchen/sitting and dining room, house bathroom, bedroom 2 with en suite bathroom and bedroom 3.

On the top floor, main bedroom with en suite bathroom, storage, 2nd reception/sunroom with doors to the sun terrace.

The large sunny south facing sun terrace, has plenty of space for BBQs, al fresco dining and enjoying the views over the roof tops and to the sea. Being just a few moments from the beach, you can escape after a long day, with a walk or swim.

Conveniently located a 10 min walk from town, and with a number of amenities on hand, including supermarket, chemist, pub and restaurant, this apartment makes for a great place to call home.



FEATURES

Light and spacious open plan living
3 bedrooms, 2 en suite
Own private entrance
Duplex apartment
Short walk to town centre
Close to the beach and Howard Davis Park
Large south facing sun terrace
Second reception/work from home space

SERVICES

Mains water and drains
Electric heating
Double glazed
Service charge £150 PCM

PARKING

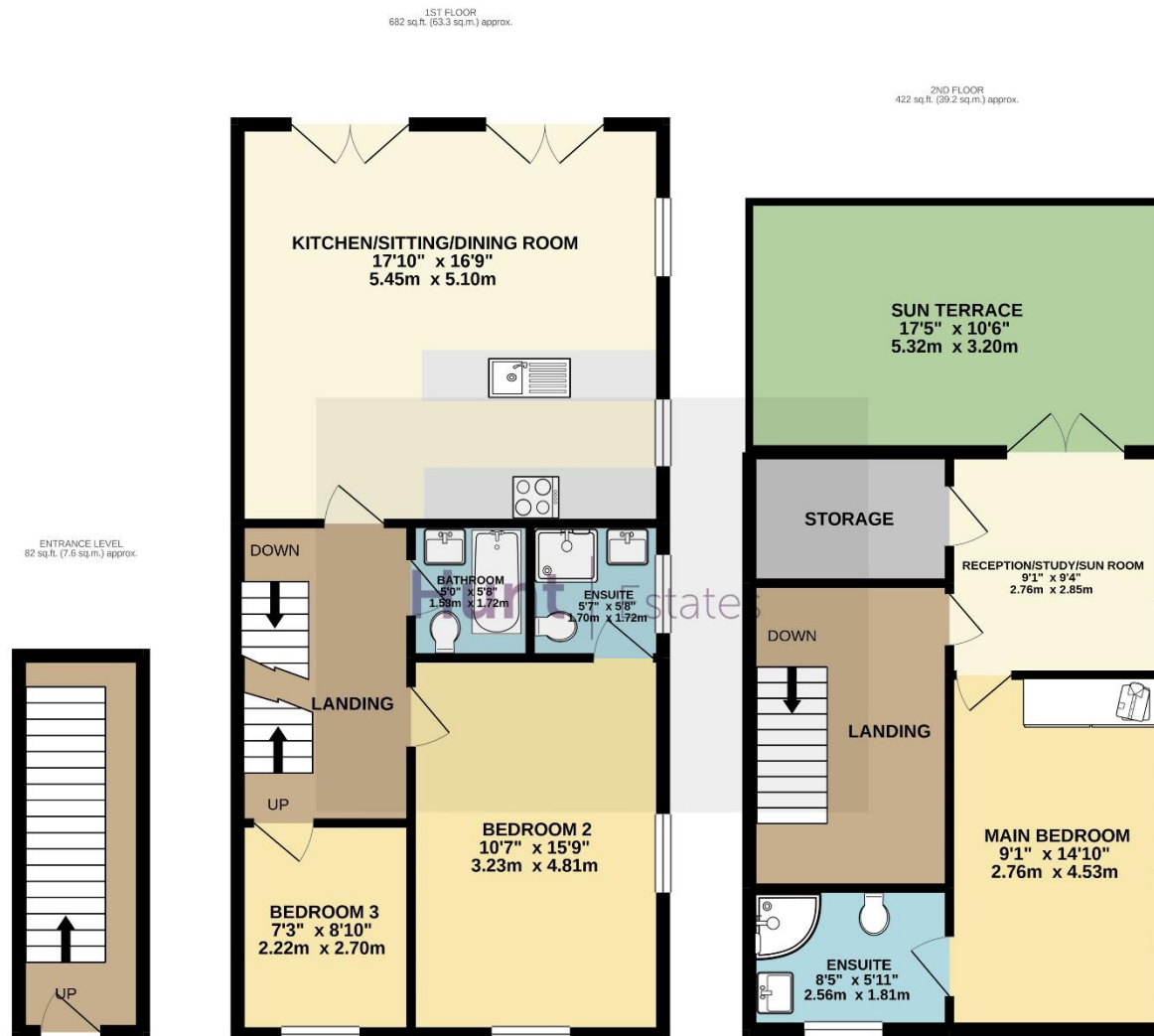
There is no designated parking with this property
Public carpark available across the road

CATEGORY AND TENURE

Share Transfer and Entitled







TOTAL FLOOR AREA : 1186 sq.ft. (110.2 sq.m.) approx.

Whilst every attempt has been made to ensure the accuracy of the floorplan contained here, measurements of doors, windows, rooms and any other items are approximate and no responsibility is taken for any error, omission or mis-statement. This plan is for illustrative purposes only and should be used as such by any prospective purchaser. The services, systems and appliances shown have not been tested and no guarantee as to their operability or efficiency can be given.

Made with Metropix ©2020

Disclaimer: The agent has not tested any apparatus, equipment, fixtures and fittings or services and so cannot verify that they are in working order or fit for purpose. A buyer is advised to obtain verification from their advocate or surveyor. References to the tenure of a property are based on information supplied by the seller. The agent has not had sight of the title documents. A buyer is advised to obtain verification from their advocate. Items shown in photographs are not included unless specifically mentioned within the sales particulars. They may however be available by separate negotiation. An inventory of the contents to be included in the transaction, will be compiled once the sale is agreed. Buyers must check the availability of any property and make an appointment to view before embarking on any journey to see a property. All measurements are approximate.