

Hunt | Estates



St Brelade

£1,625,000

Contemporary accommodation with spectacular sea views



Beautiful sea views

3 double bedrooms

Large open plan living

Bi folding doors out onto balconies

Contemporary living

Brand new build

Garage and further parking







This impressive south facing three bedroom home, nestled in an elevated position above St Aubin's Bay, has been newly built to a very high standard throughout. The contemporary living accommodation is arranged over three floors with the living space on the top floor, enabling your entertaining and living space to make the most of the enviable panoramic sea views all the way from St Aubin's Bay across to St Helier.

This spectacular home has several desirable features such as floor to ceiling windows, a bespoke wood and glass staircase and bi folding doors out onto all three balconies. The entire property is flooded with natural light and is only a short walk to the restaurants, bars and amenities St Aubin's has to offer.



Comprises: Spacious entrance hall, large open plan kitchen/diner/living room leading out through bi folding doors onto a full width balcony with uninterrupted views of St Aubin's Bay, large master bedroom with access out onto the balcony and an en suite shower room and dressing area plus a further two double bedrooms both en suite.

Externally this property benefits from a single garage and parking for a further two cars plus visitor space.

This stunning property is one of three houses available in this development.





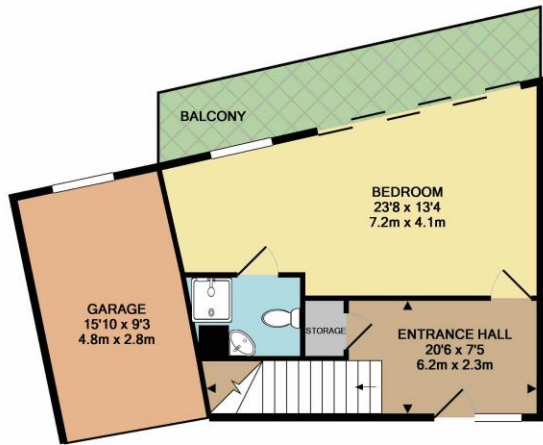


SERVICES

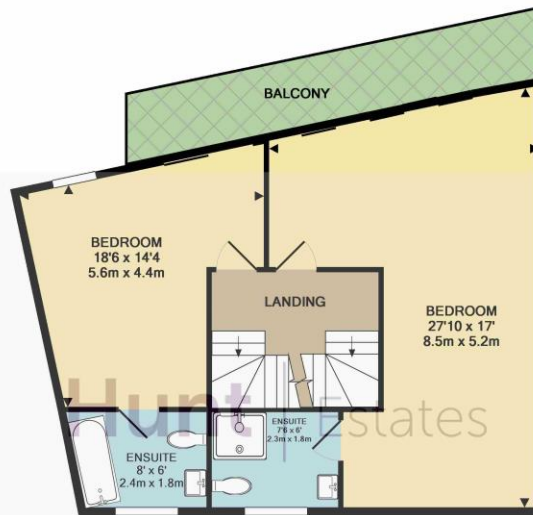
Mains drains and water, electric under floor heating and double glazed throughout.

Parking: Single garage plus a further two spaces and visitor parking.

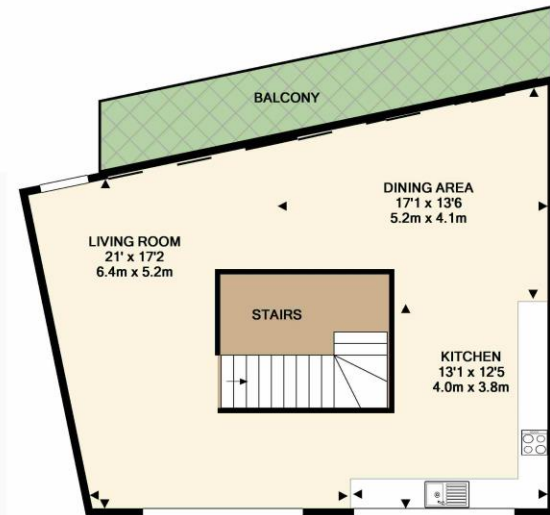
Tenure & Category: Freehold & Entitled/Licensed



GROUND FLOOR
APPROX. FLOOR
AREA 545 SQ.FT.
(50.6 SQ.M.)



1ST FLOOR
APPROX. FLOOR
AREA 717 SQ.FT.
(66.6 SQ.M.)



2ND FLOOR
APPROX. FLOOR
AREA 719 SQ.FT.
(66.8 SQ.M.)

TOTAL APPROX. FLOOR AREA 1980 SQ.FT. (184.0 SQ.M.)

Whilst every attempt has been made to ensure the accuracy of the floor plan contained here, all measurements are approximate and no responsibility is taken for any errors. You may not make a permanent copy of or reproduce this floor plan in any form as the intellectual rights belong to Hunt Estates Limited.
Made with Metropix ©2019

Disclaimer: The agent has not tested any apparatus, equipment, fixtures and fittings or services and so cannot verify that they are in working order or fit for purpose. A buyer is advised to obtain verification from their advocate or surveyor. References to the tenure of a property are based on information supplied by the seller. The agent has not had sight of the title documents. A buyer is advised to obtain verification from their advocate. Items shown in photographs are not included unless specifically mentioned within the sales particulars. They may however be available by separate negotiation. An inventory of the contents to be included in the transaction, will be compiled once the sale is agreed. Buyers must check the availability of any property and make an appointment to view before embarking on any journey to see a property. All measurements are approximate.

All viewings to be conducted through Hunt Estates. Tel: 01534 860650

Hunt | Estates



CONTACT US

E enquiries@huntestates.co
T 01534 860 650
W www.huntestates.co

ADDRESS

9 New Street
St Helier
Jersey
JE2 3RA