

Hunt | Estates



St Saviour

£2,250,000

Grade 4 Listed Family Home



Grade 4 Listed property

Own driveway approach

5 Bedrooms (inc 2 en suites)

900+ sq ft Master suite

Ample courtyard parking

Nearly 5000 sq ft of accommodation

Very private

Desirable location

Newly renovated



Accessed via its own driveway this imposing period property offers over 4900 sq ft of accommodation over 4 floors, including a large windowed basement which would make an ideal studio/office/gym or even games room. The dual aspect kitchen includes contemporary appliances housed in traditional style cabinets with stone worktops. The curved bay windows featured on the ground and first floors add to the elegance of this stunning period home.



Comprising:

Basement level - Large central space with 2 adjoining rooms, utility, and shower room.

Ground floor - Rear hallway, cloakroom, kitchen, dining room, study, sitting room, and entrance hall.

First floor - 4 Bedrooms, 2 bathrooms (1 of which is ensuite).

Second floor - Master bedroom suite with walk-in dressing room, en suite bathroom and doors to balcony (This suite is over 900 sq ft!)







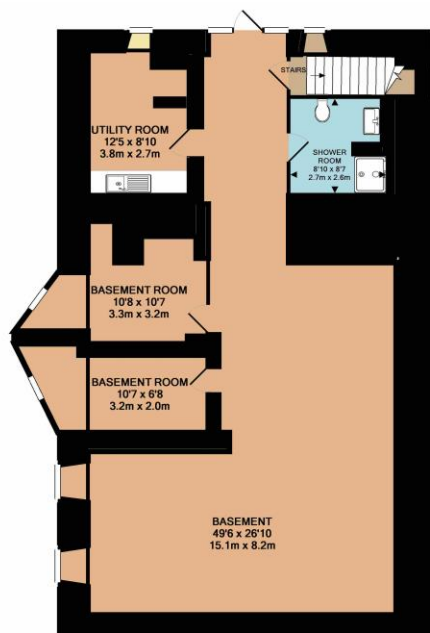


SERVICES:

All mains. Double glazed. Under floor heating

Parking for 10+ cars.

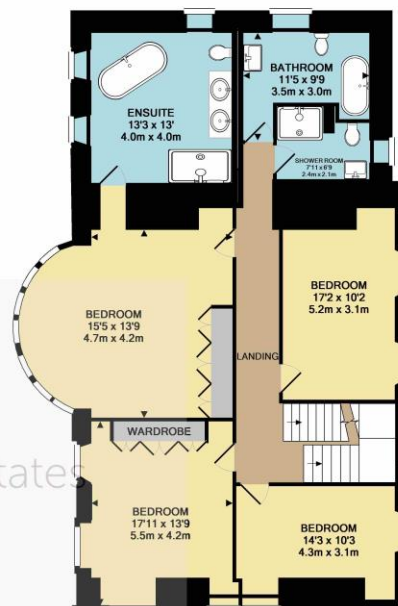
Category & Tenure: Freehold & Entitled



BASEMENT LEVEL
APPROX. FLOOR
AREA 1250 SQ.FT.
(116.7 SQ.M.)



GROUND FLOOR
APPROX. FLOOR
AREA 1423 SQ.FT.
(132.2 SQ.M.)



1ST FLOOR
APPROX. FLOOR
AREA 1341 SQ.FT.
(124.6 SQ.M.)



2ND FLOOR
APPROX. FLOOR
AREA 901 SQ.FT.
(83.7 SQ.M.)

TOTAL APPROX. FLOOR AREA 4922 SQ.FT. (457.2 SQ.M.)

Whilst every attempt has been made to ensure the accuracy of the floor plan contained here, all measurements are approximate and no responsibility is taken for any errors. You may not make a permanent copy of or reproduce this floor plan in any form as the intellectual rights belong to Hunt Estates Limited.
Made with Metropix ©2018

Disclaimer: The agent has not tested any apparatus, equipment, fixtures and fittings or services and so cannot verify that they are in working order or fit for purpose. A buyer is advised to obtain verification from their advocate or surveyor. References to the tenure of a property are based on information supplied by the seller. The agent has not had sight of the title documents. A buyer is advised to obtain verification from their advocate. Items shown in photographs are not included unless specifically mentioned within the sales particulars. They may however be available by separate negotiation.

An inventory of the contents to be included in the transaction, will be compiled once the sale is agreed. Buyers must check the availability of any property and make an appointment to view before embarking on any journey to see a property. All measurements are approximate.

All viewings to be conducted through Hunt Estates. Tel: 01534 860650

Hunt | Estates



CONTACT US

E enquiries@huntestates.co
T 01534 860 650
W www.huntestates.co

ADDRESS

9 New Street
St Helier
Jersey
JE2 3RA