

Hunt | Estates



St. Helier

£595,000

Large Victorian Home

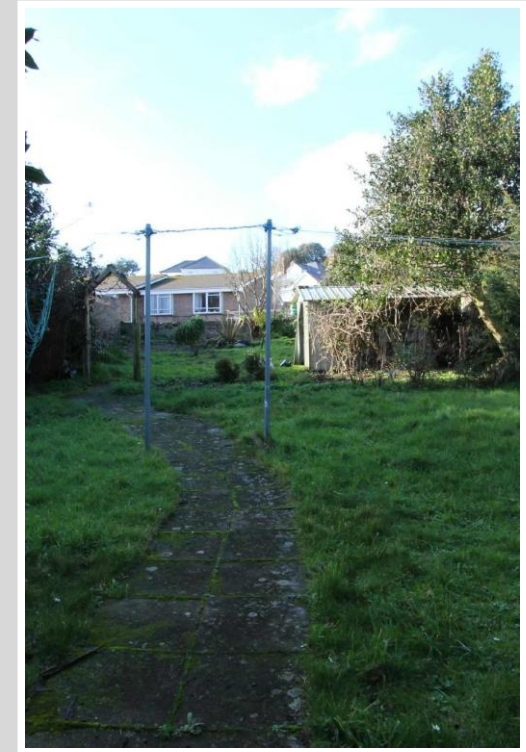


A large Victorian home which has recently been used as a guest house. Situated on the outskirts of St. Helier near Havres des Pas, it is just a short stroll to the beach and it is possible to walk to central St. Helier in approx 15 mins.

The accommodation stretches over three floors with a total of 12 rooms (four rooms on each floor). The property is in need of renovation throughout and offers tremendous scope for further development. Of particular note is the large rear garden where it would be possible to build a large extension (subject to planning permission).

The property would appeal to those looking for a large family or two generation home, a developer or builder looking to make apartments.

Comprises: entrance hall, four reception rooms, kitchen, w.c and ancillary space at ground floor level, four rooms, bathroom and separate shower room at first floor level, four rooms and separate shower room at second floor level.

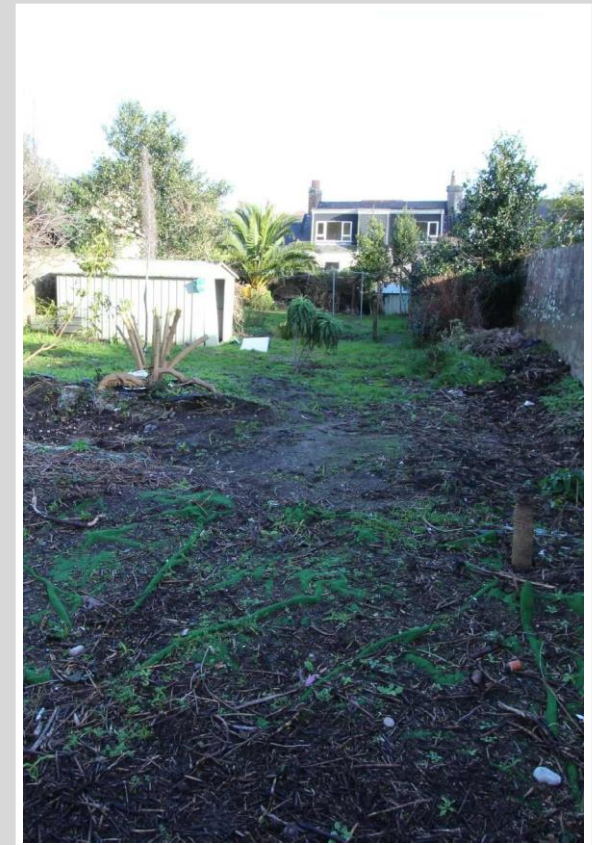


Former Guest House

Large rear garden

In need of renovation

Suitable for re-development
(subject to planning)

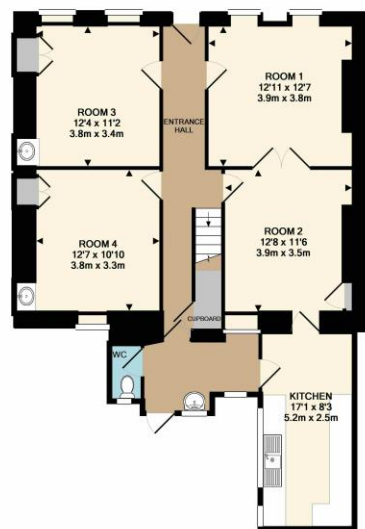


Twelve rooms over three floors

Short stroll to the beach

Grocery store on hand

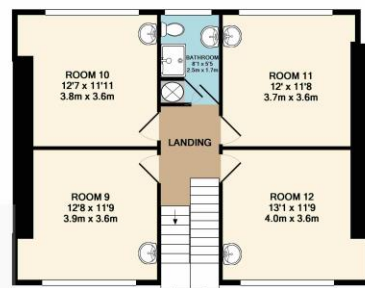
Approx 15min walk to town



GROUND FLOOR
APPROX. FLOOR
AREA 972 SQ.FT.
(90.3 SQ.M.)



1ST FLOOR
APPROX. FLOOR
AREA 806 SQ.FT.
(74.9 SQ.M.)



2ND FLOOR
APPROX. FLOOR
AREA 887 SQ.FT.
(81.9 SQ.M.)

TOTAL APPROX. FLOOR AREA 2466 SQ.FT. (229.1 SQ.M.)

Whilst every attempt has been made to ensure the accuracy of the floor plan contained here, all measurements are approximate and no responsibility is taken for any errors. You may not make a permanent copy of or reproduce this floor plan in any form as the intellectual rights belong to Hunt Estates Limited.
Made with Metropix ©2018



Disclaimer: The agent has not tested any apparatus, equipment, fixtures and fittings or services and so cannot verify that they are in working order or fit for purpose. A buyer is advised to obtain verification from their advocate or surveyor. References to the tenure of a property are based on information supplied by the seller. The agent has not had sight of the title documents. A buyer is advised to obtain verification from their advocate. Items shown in photographs are not included unless specifically mentioned within the sales particulars. They may however be available by separate negotiation.

An inventory of the contents to be included in the transaction, will be compiled once the sale is agreed. Buyers must check the availability of any property and make an appointment to view before embarking on any journey to see a property. All measurements are approximate.

All viewings to be conducted through Hunt Estates. Tel: 01534 860650

Hunt | Estates



CONTACT US

E enquiries@huntstates.co
T 01534 860 650
W www.huntstates.co

ADDRESS

9 New Street
St Helier
Jersey
JE2 3RA