



Hunt Estates

A Delightful Semi-Detached Home On A Select Development
St. Clement, Jersey

A DELIGHTFUL SEMI-DETACHED HOME ON A SELECT DEVELOPMENT

A quiet home, stylishly decorated, with a bright and airy sitting room. There is a charming country style kitchen with plenty of work space, and high and low-level cupboards.

Upstairs there are two double bedrooms and house bathroom.

Externally the property benefits from a patio garden which wraps around the property, offering space for alfresco dining in the summer months.

The property is well located and is just a short stroll to the quiet beach at Le Hocq, and the popular Le Hocq bar and restaurant, perfect for casual dining. All the major supermarkets including Waitrose and the Co-operative are just a short drive away.

It is an easy commute into St Helier, with the frequent number 1 bus route, stopping just around the corner.

The property benefits from driveway parking for 1 and a single garage, in addition, there are 4 visitor parking spaces for the development.









FEATURES

- Two-bedroom semi-detached house
- Large sitting/dining room
- Close to the beach
- Patio garden
- Bright and airy
- On a good bus route

INFORMATION

- Mains water and drains
- Double glazed
- Electric heating
- Single garage and driveway parking for one
- Four visitor parking spaces for the development
- No commercial vehicles, boats, or camper vans
- Occupier rates for 2022 were £210
- Management charge approx. £170 per annum
- Available from 1 December to Entitled/Licensed residents
- Please note that the equivalent of one months rent is required for the deposit



Gill Hunt, FNAEA
Director

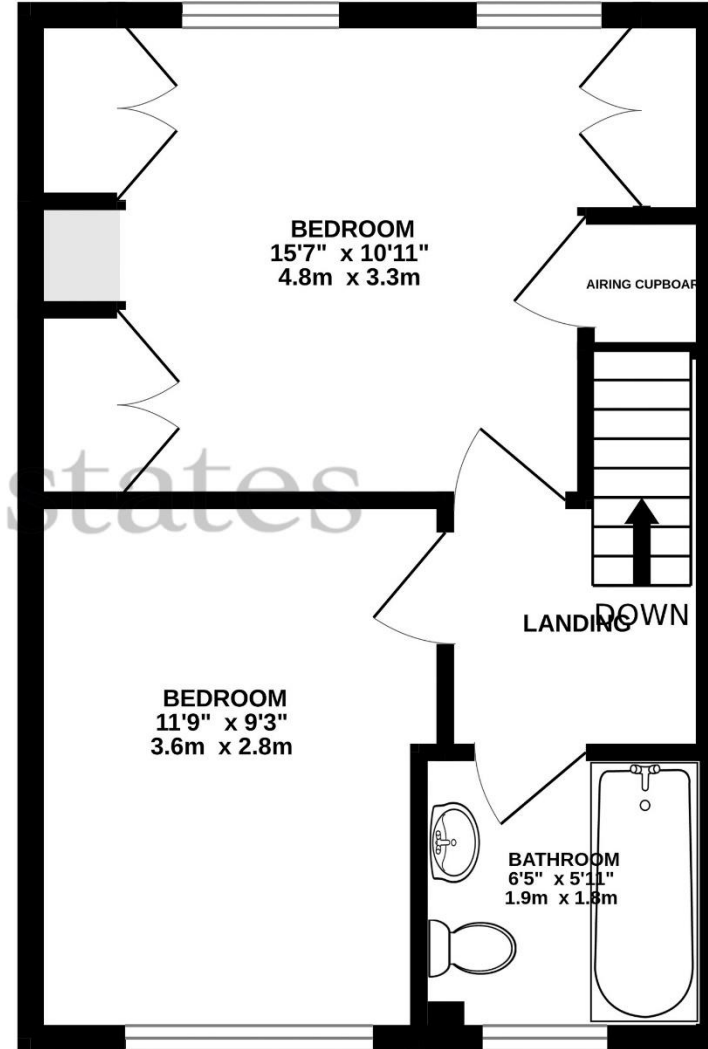
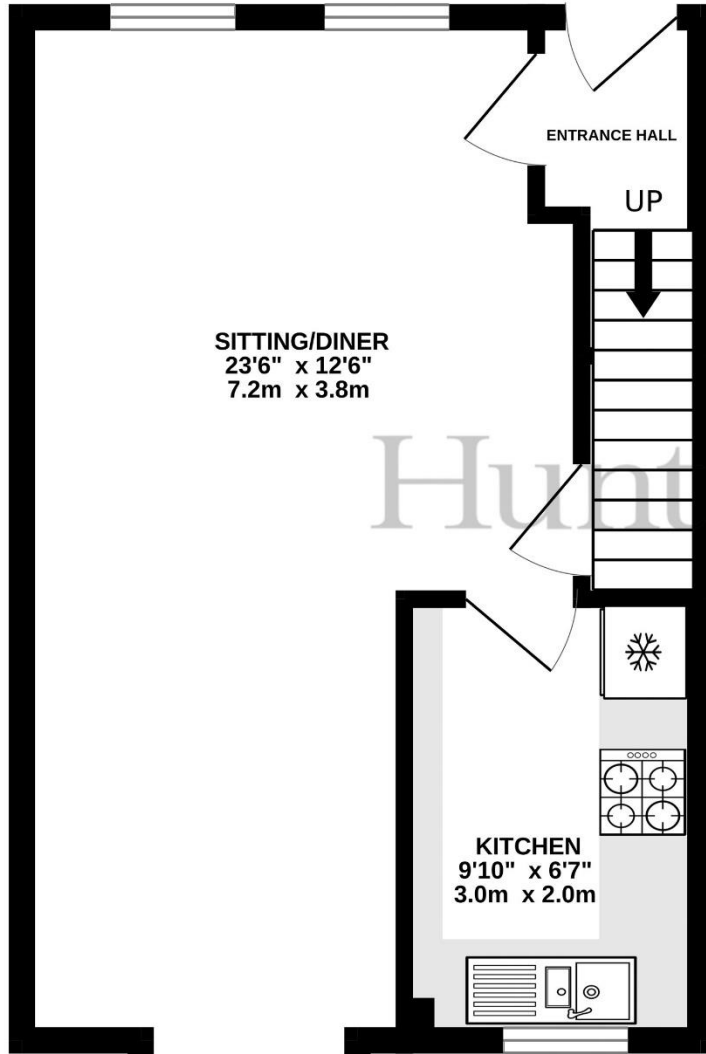
gill@huntstates.com
T +44 (0)7797 721881
www.huntstates.com
9 New Street, St Helier,
Jersey, JE2 3RA

CHRISTIE'S | Hunt Estates
INTERNATIONAL REAL ESTATE



1ST FLOOR
347 sq.ft. (32.3 sq.m.) approx.

GROUND FLOOR
350 sq.ft. (32.5 sq.m.) approx.



TOTAL FLOOR AREA : 697 sq.ft. (64.8 sq.m.) approx.

Whilst every attempt has been made to ensure the accuracy of the floorplan contained here, measurements of doors, windows, rooms and any other items are approximate and no responsibility is taken for any error, omission or mis-statement. This plan is for illustrative purposes only and should be used as such by any prospective purchaser. The services, systems and appliances shown have not been tested and no guarantee as to their operability or efficiency can be given.

Made with Metropix ©2023

Hunt Estates

9 New Street, St Helier, Jersey, JE2 3RA, Channel Islands | +44 1534 860650 | www.huntestates.com | enquiries@huntestates.com

Disclaimer: All information provided herein has been obtained from sources believed reliable, but may be subject to errors, omissions, change of price, prior sale, withdrawal without notice. Hunt Estates make no representation, warranty, or guarantee as to accuracy of any information contained herein. You should consult your advisors for an independent investigation of any properties. All viewings to be conducted through Hunt Estates.